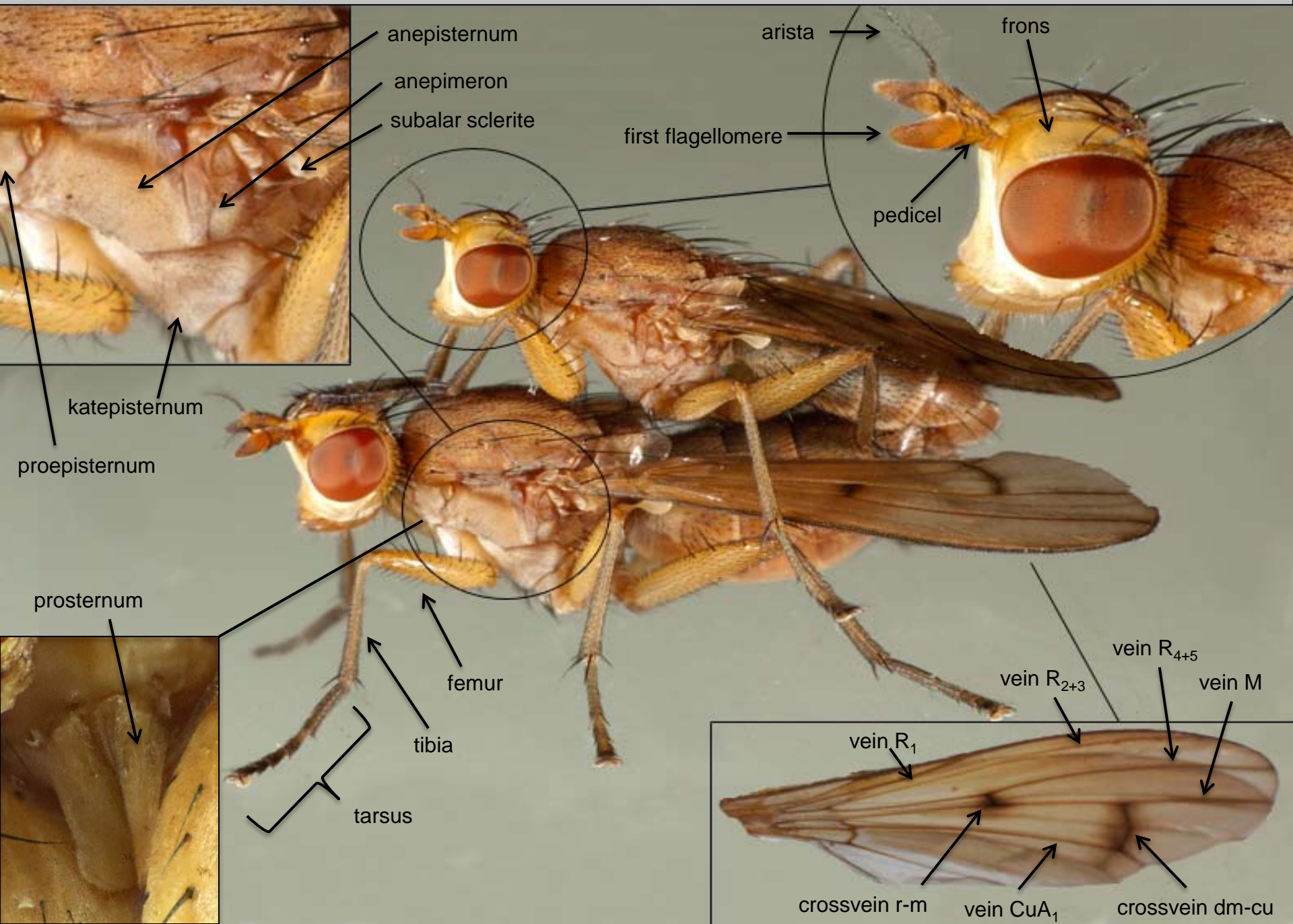
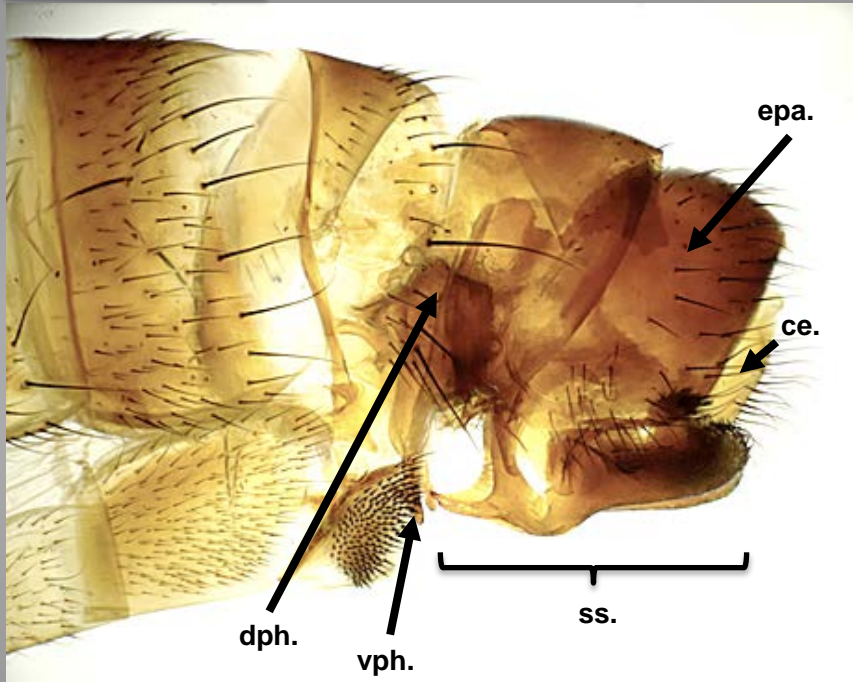


ILLUSTRATED GLOSSARY OF MORPHOLOGICAL TERMS

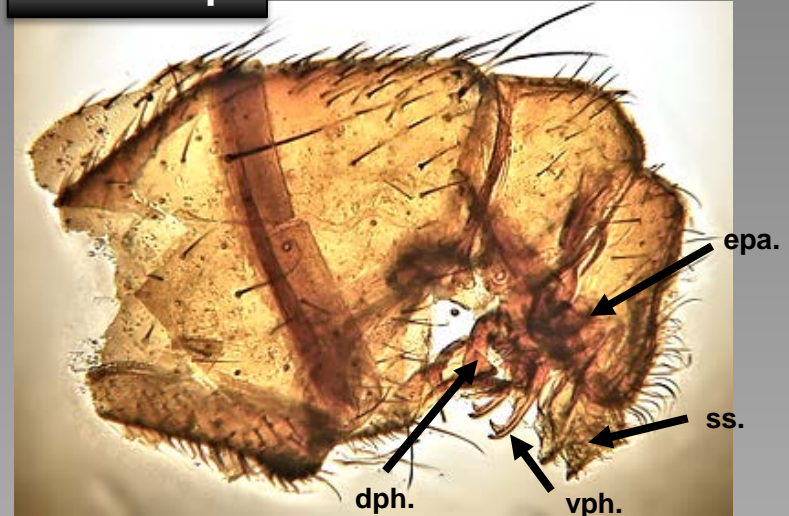


ILLUSTRATED GLOSSARY OF MALE GENITALIA CHARACTERS

Dictya sp.



Limnia sp.



(Steyskal et al., 1978)

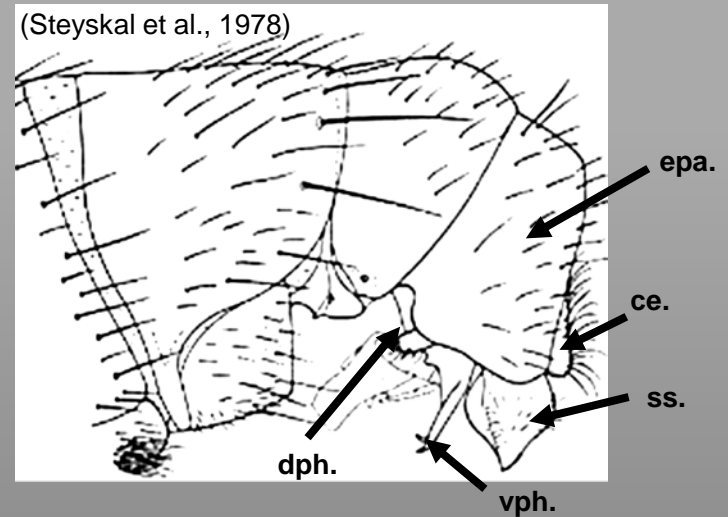


Figure legend

ce. = cerci

epa. = epandrium

hy. = hypandrium

as. = anterior surstylus

ps. = posterior surstylus

ss. = surstylus

vpe. = central process of epandrium

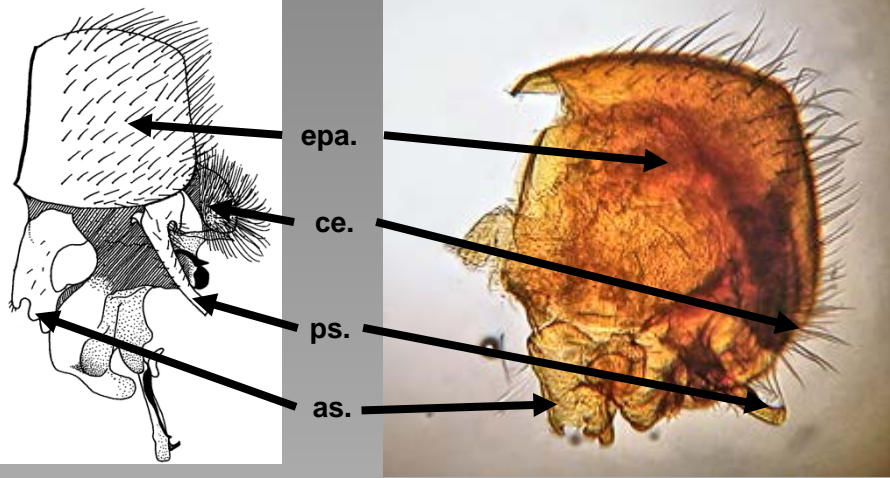
dph. = dorsal process of hypandrium

vph. = ventral process of hypandrium

ILLUSTRATED GLOSSARY OF MALE GENITALIA CHARACTERS (CONT'D)

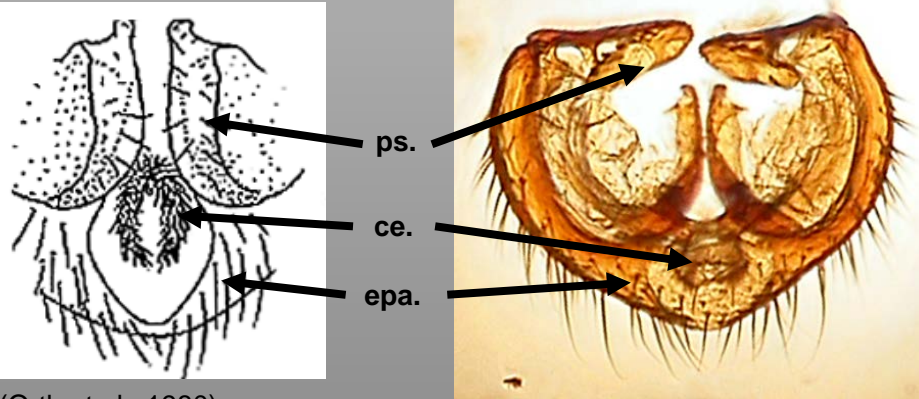
Pherbellia sp.

LATERAL VIEW



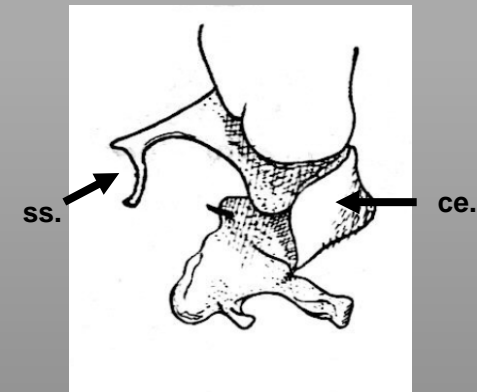
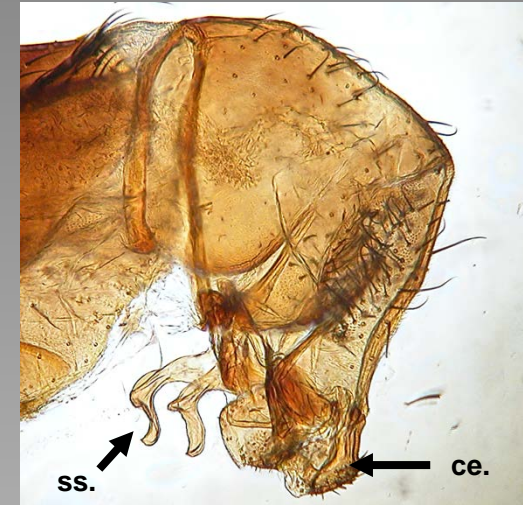
(Steyskal, 1961)

VENTRAL VIEW



(Orth et al., 1980)

Sepedon sp.



(Steyskal, 1951a)

Figure legend

ce. = cerci

epa. = epandrium

hy. = hypandrium

as. = anterior surstylus

ps. = posterior surstylus

ss. = surstylus

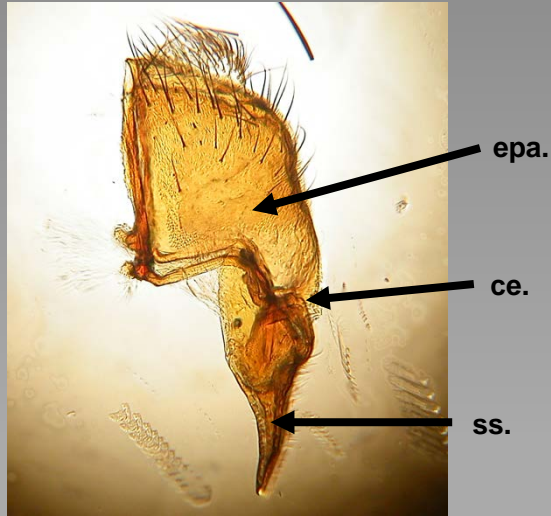
vpe. = central process of epandrium

vph. = ventral process of hypandrium

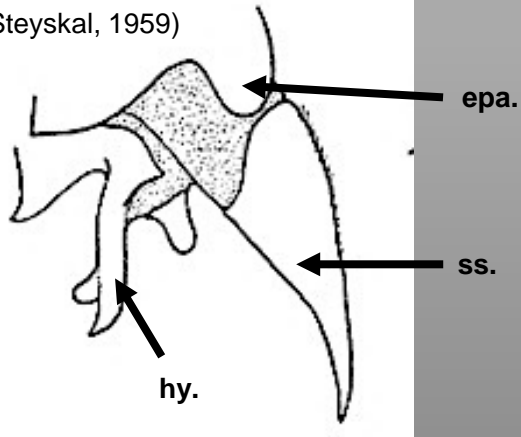
ILLUSTRATED GLOSSARY OF MALE GENITALIA CHARACTERS (CONT'D)

Tetanocera sp.

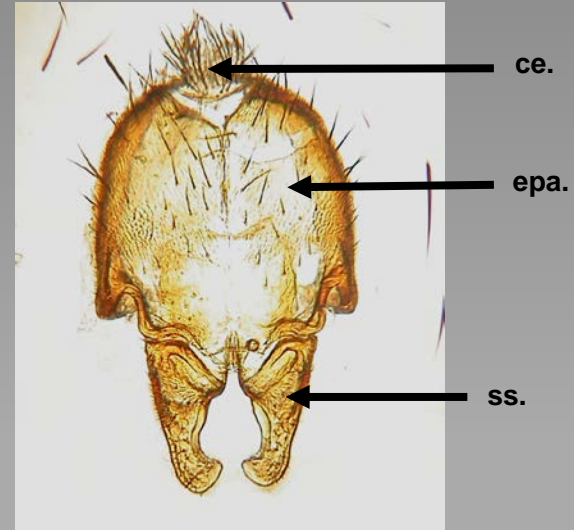
LATERAL VIEW



(Steyskal, 1959)



POSTERIOR VIEW



(Steyskal, 1959)

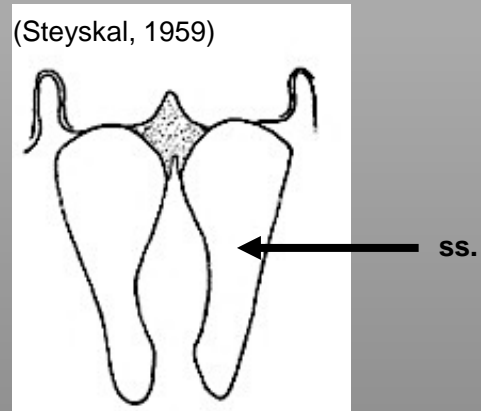


Figure legend

ce. = cerci

epa. = epandrium

hy. = hypandrium

as. = anterior surstylus

ps. = posterior surstylus

ss. = surstylus

vpe. = central process of epandrium

vph. = ventral process of hypandrium

ILLUSTRATED GLOSSARY OF COMMON WING INTERFERENCE PATTERNS (WIPs)

